



# **Monsignor Clarke School**

## **2020-2021**

### **Reopening Plan**

Revised 8/18/20



# Overview

Monsignor Clarke School is actively planning for in person school operations to resume in the fall of 2020. Guided by all appropriate health and safety precautions and mandates, determined by the Rhode Island Department of Health, RIDE, governor's office and The Centers for Disease Control faculty and administration will continue to plan and implement infrastructure, policies and preparations throughout the summer.

The plans will prioritize teacher and student safety and guide our educational community through a year of challenges, opportunities and evolving realities. This serves as a transparent document that communicates our current direction as we prepare for an academic year alongside the COVID-19 virus. It will evolve in depth and scope as new guidelines and additional decisions define our experience.



# Planning for a Unique Year

The best information we have indicates that all educational communities should prepare for interruptions in school learning due to COVID-19. During those situations where we are unable to have students in our building, we will implement a distance learning program. Families that choose Monsignor Clarke School should be prepared for a year of challenges that require our partnership in flexibility as we navigate inconveniences and uncertainties together.

# Reopening Planning

For several months, Monsignor Clarke School has been engaged in preparation for the 2020 - 2021 school year. Our school reopening task force was assembled to assist us in preparation alongside evolving directives and guidance.

The reopening of Monsignor Clarke School was guided by the following principles:

- We will protect the health and safety of all students and staff
- We will follow the guidelines of RIDOH, CDC, RIDE, AAP and the governor of RI
- We will strive to provide the best academic / social / emotional experience
- We will provide clear expectations for teachers and students
- We will strive to be equitable, flexible and adaptive

# Reopening Planning

As we plan to open our school, RIDE directed us to design reopening strategies in these three scenarios. The governor has prioritized full in-person learning as the scenario to reopen schools as of this date. The plan we are sharing with you, is reflective of full in-person learning. Please note however, if this should change, the school has already designed plans to address both limited and partial in-person learning.

## Overview of School Reopening Scenarios

Section	Limited In-Person Learning	Partial In-Person Learning	Full In-Person Learning
High Level Overview	<p>General population resumes distance learning from home to prioritize in person for some elementary OR transition grades.</p> <p>Prioritize in-person reentry for educationally vulnerable subgroups (i.e. differently abled students and multi-lingual learners).</p>	<p>Elementary and transition grades reenter in person, with staggered entry preferred.</p> <p>Remaining groups begin the school year with distance learning</p>	<p>Schools resume 100% in-person operations, with some physical distancing protocols still required based on current health information</p> <p>Distance learning is integrated with in-person programs and utilized as necessary</p>

# Health and Safety Guide Our Planning

The health and safety of every teacher, staff member and student is our top priority as we navigate the new normals and challenging realities. We are currently working on robust plans and policies to support the CDC and RIDOH's evolving guidelines that provide a safe reopening of campus for all. While details will be expanded in the weeks to come, we can anticipate a wide variety of new processes and expectations to guide our interactions.



In preparation for the Fall, we are working on the following:

- Expanding school cleaning services for more ongoing and targeted cleaning and disinfecting as guided by the CDC
- Detailing student and faculty health policy review and revising to align with emerging expectations and guidelines.
- Moving classrooms and expanding space for social distancing
- Reviewing and revising plans for arrival and dismissal
- Reviewing schedule and plans for extended day programs and specials





## Student & Staff Screening

- Parents to screen children at home and keep them home if they fail screening.
- Temperature checks will be done on random students before entering the school. Pre-k & Little Angels students daily temperature checks.
- Teachers to informally screen students (How was your weekend? Where did you go?)
- Parents required to notify school if they travel out of the state/country.
- Temperature checks required for staff with self-monitoring on the screening/attestation form.
- Each classroom teacher will have thermometer to temp check as needed.



## Drop off & Pick up

- Drop off and pick up times and traffic patterns TBD. Waiting for information from bus companies.
- There may be multiple points of entry to be assigned by grade.
- Students riding buses may be released earlier and be dismissed from classrooms.



## Visitors

- Visitors will be limited (contactless pickup for forgotten items)
- All visitors entering the building must wear a cloth face covering over nose and mouth.
- Volunteers may be allowed to assist in lunch room or science lab.
- Anyone entering the building is required to sign in and school will maintain a visitor log for at least 30 days. Screen for temperature.





## Classroom Layout

- Focus on creating and maintaining stable groups per department of health/RIDE guidelines.
- Keep all grades to a limited number that will enhance 6 foot social distancing.
- Classroom locations moved to take advantage of the movable walls for larger class sizes.
- Assigned seating in classrooms. All students face one way.



## Facemasks

- Staff and students in grades K through 8 must wear face masks.
- Teachers who move from room to room or interact with others will need to wear a mask and maintain social distancing.
- Frequent breaks and outdoor time will be provided for students throughout the day.
- At this time, based on guidance from health authorities, neck gaiters, open-chin triangle bandanas and face coverings containing valves, mesh material or holes of any kind are not acceptable face coverings.
- Recommended that face masks are only worn for one day and then are washed.



## Bathrooms

- Staggered, multi-scheduled bathroom breaks with cleaning/disinfection in between. Only one stable group at a time in assigned bathroom.
- Emergency / "extra times" required for bathroom usage for elementary and MS will have to be coordinated by the classroom teacher and the front office notified for immediate cleaning.





## Lunch

- Schedule will be created so that grades can rotate to use outdoor space (picnic tables), cafeteria or classroom locations for lunch. Emphasis will be keeping stable groups.
- New protocols created to monitor any food allergies and epipens will remain with classroom teacher instead of cafeteria.
- All areas will be cleaned after each stable groups' use.



## Cleaning Protocol

- Additional and consistent cleaning time as well as additional staff will address the added scope of cleaning in the school.
- A strict schedule of cleaning all high touch surfaces will be followed.
- Middle School students to sanitize their own desk and work areas with cleaning wipes.



## Hallways

- Everyone must be masked in the hallways at all times.
- MS - Staggered schedule so only one stable group moves at a time.
- ELEM - no two-way traffic. Single lane only to/from lav/cafe. Master schedule for all stable pod movements.





## Recess & Outdoor Time

- Planning for both Middle School and Elementary to have daily recess in stable groups (schedule will be created)
- Masks must be worn in the hallway to/from recess area.
- Handwashing before and after recess
- Using outdoor space for classess is encouraged
- The use of breaks and movement throughout the day while following safety guidelines is encouraged.



## Athletics & School Activities

- Only Cross Country/Tennis approved at this time. No busing will be provided.
- Masks to be worn unless actively playing and running.
- Carpooling should be done with care - stable group, masks, etc.
- Hand sanitizer provided by school
- No shared snacks, water bottles
- No Band or Choir in person
- Other clubs and activities TBD



## Extended Day

- We are planning to offer extended day for those families that are in need of it. All safety guidelines will be followed. When possible students should be outside.
- Locations for Extended Day TBD
- Unfortunately we cannot permit drop ins. Parents may purchase a daycare plan/package to reserve their spot in advance.
- Outside play highly encouraged





## Transportation

- We are awaiting information from bus companies and should have more information soon.
- Parents are encouraged to explore alternate means of transportation for this school year.



## Responding to Illness

The school will follow RIDOH Playbook. Readers are urged to view the RI Department of Health document in its entirety. Outbreak Response Protocols: Pre K-12 Guidance for COVID-19 can be found here:

<https://health.ri.gov/publications/presentations/Outbreak-Response-Protocols-PreK-12.pdf?fbclid=IwAR35WERyb4HqUMn3fvmdWMWL0o0pKXrqTyZIUhGYHzwq424VJwT5HQpeG4>



## Responding to Illness Cont.

- Students need to be kept home if not feeling well. **THIS IS CRITICAL**
- If a child gets ill in school, the nurse will be summoned to the classroom.
- If student is showing any signs of COVID they will be taken to the isolation room.
- Parents must pick up within 1 hour. Parents may be instructed to seek medical advice before returning to school.
- RIDOH will provide guidance for room disinfecting, notification of parents, and other important details.





## Isolation Room

- Should a student in the nurse's judgement show any signs of COVID symptoms (CDC guidance) a student may be taken to an isolation room across from the nurses office.
- The nurse and another staff member will be dressed in full PPE
- The parent who is picking up will be asked to remain in the foyer as we escort the child to them.



## Substitute Teachers

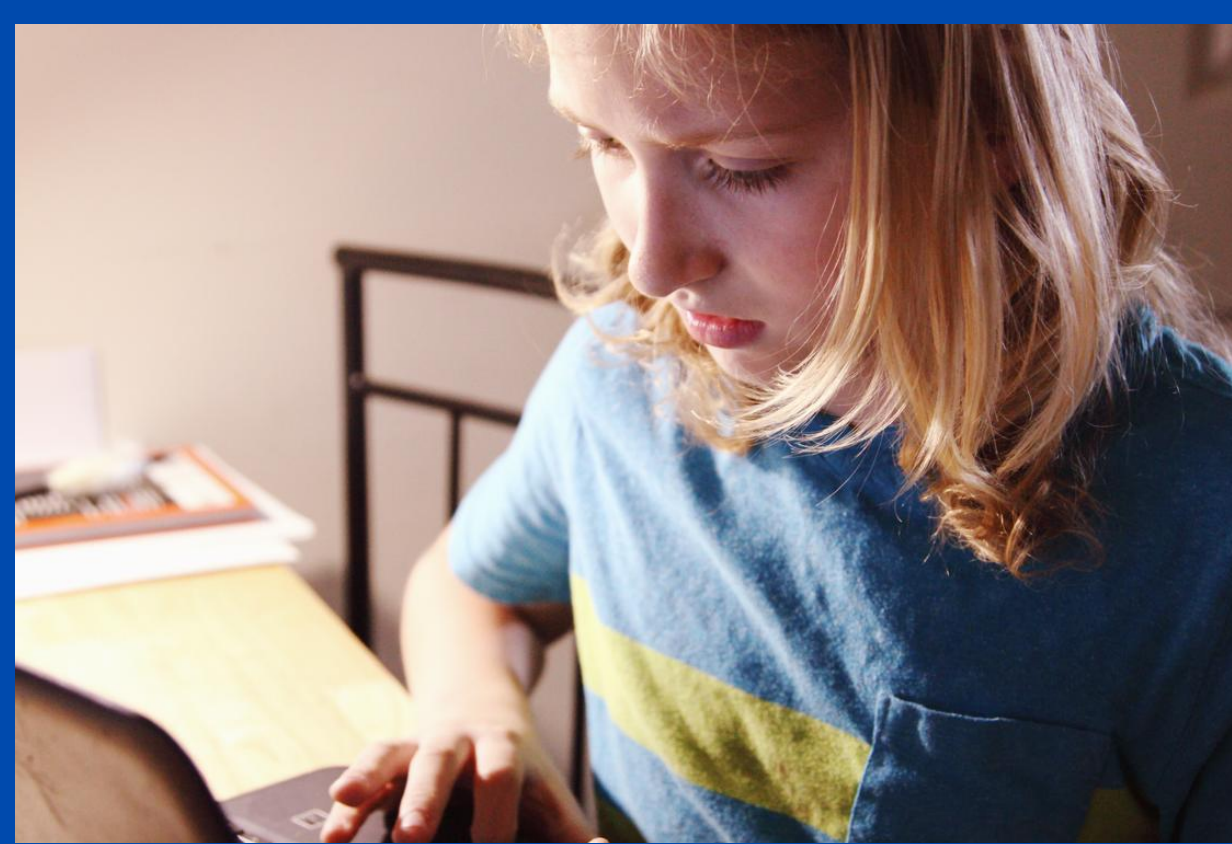
- School is working on developing a stable list of substitute teachers.
- Any substitute will be required to wear a face covering and social distance in the classroom.
- Substitute teachers will be screened by front office staff using temperature checks and screening attestation form before entering the school each day.



## Specials

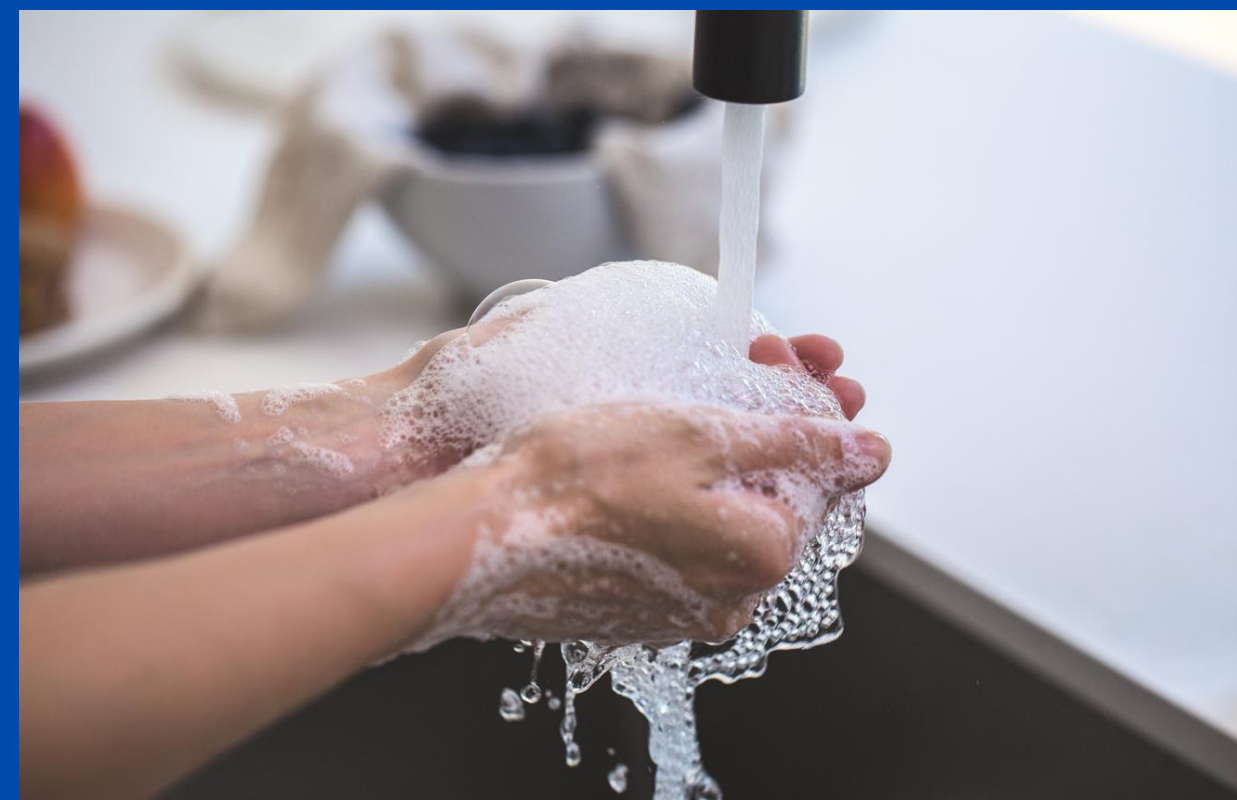
- Specials teachers will come to the classrooms instead of students moving.
- Specials teachers are required to wear masks and practice social distancing.
- PE will take place outside as much as possible.
- Spanish for grades 6-8 this year. School will provide virtual based Spanish enrichment for those families that want it.





## Distance Learning

- MCS is working on expanding and enhancing our distance learning programing.
- Should we return to remote learning, lessons learned from last year as well as new applications will guide teachers in crafting an equitable instructional program for all grades.
- A parent technology focus group has been formed to examine bandwidth, platform, issues and updates to technology.
- This may provide an option for families to have in school/out of school flexibility.



## Hygene and Handwashing

- Hygiene is of critical importance in slowing the transmission of the virus.
- Handwashing to follow CDC guidelines that include handwashing upon entry to classrooms, before & after lunch and recess, or whenever students leave the classrooms, as well as intermittently throughout the day.
- Touchless dispensers have been added to all classrooms that don't have sinks.



## Emotional Health

- These will be difficult times for both students and staff. We will take extra measures to consider emotional needs. Resiliency, relaxation, re-centering, stress management and other,relative topics will become part of our daily instructional program.
- Parents are urged to share with teachers if their child is experiencing stress related or other social emotional issues so we can work together to support all students.

# New Procedures & Resources

Monsignor Clarke School will be making updates to the Parent Handbook for the 2020-2021 school year. The school re-entry plan will be added as an addendum. Since guidance is continually changing, we will notify families of any updates when they occur.

Families will be able to reference this handbook as a helpful tool for policies surrounding illness and response to illness, new procedures and more.



# Plan Implementation

You may be thinking how is MCS going to do all of this before the start of school? We plan to send a wish list of items we could use and we will also be asking you to consider donations of time and talent to help us get ready for the school year ahead.

More information coming soon!

Thank you for your continued support and partnership.